

Name: _____

Date: _____

Domain and Range

Domain: All the possible values for the input, or the independent variable (x), of a function.

Range: The possible values of the output, or dependent variable, y or $f(x)$, of a function.

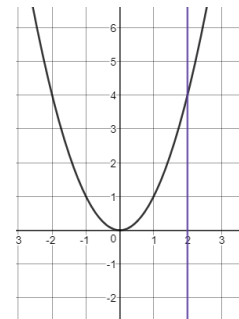
Discrete Function: The points are not connected to each other. We list the domain and range as individual points or numbers.

Continuous Function: Can be graphed as a smooth line or curve. We write the domain and range as an interval.

Vertical Line Test: If you can draw a vertical line and it crosses the graph **ONCE**, it is a **FUNCTION**.

If you can draw a vertical line and it crosses the graph **MORE THAN ONCE**, it is **NOT** a function.

Example:



Examples: List the domain and range. Then decide if the relation is a function.

x	y
0	-4
2	-6
4	-8

