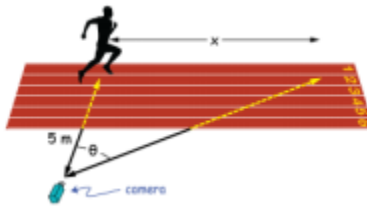


NAME _____

AP CALCULUS BC ASSIGNMENTS



5: Applications of Derivatives

Unless changed in class, assume the assignment is due the next day.

DATE	Topic	ASSIGNMENT	COMPLETE
10/30	Absolute and relative extrema	5.1: p. 198 #7-10, 11, 14, 15, 19	
10/31	Mean Value Theorem for derivatives	5.2 p. 198 #4, 12, 18, 22 p. 206 #1, 4, 16, 17, 18, 31, 32	
11/1	Connecting graphs of f and f'	5.3: p. 206 #10, 44 p. 219 #1, 2, 4, 21-24	
11/2	Connecting graphs of f , f' , and f''	5.4: p. 219 #7-10, 13, 14, 30	
11/5	Box to the Max Activity In-class AP Free Response Problem		X
11/6	Modeling and Optimization	5.5 p. 219 #39, 41, 48 p. 230 #2, 8, 11, 14	
11/7	Linearization and differentials Quiz	5.6: p. 246 #1, 5, 9, 16, 41	
11/8	Related Rates	5.7 p. 255 #1-3, 5, 8, 10, 13	
11/9	More Related Rates	5.8 p. 256 #14-16, 19, 21, 33	
11/12	Unit 5 Study Guide		X
11/15	Unit 5 Test		Total _____(80)